

# Cool Stuff at the Embedded Systems Conference

Dave Jaffe

04/28/2007

# RabbitCore RCM4400W

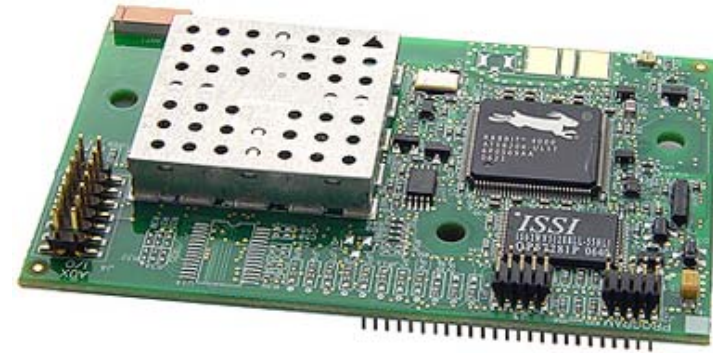
- Rabbit core at 60 Mhz
- Wi-Fi connectivity
- 512 Kb Flash, 512 Kb SRAM
- 35 I/O lines
- 1.84 by 2.85”
- \$120, development kit \$199 (special)



<http://www.rabbitsemiconductor.com/products/RCM4400W/>

# RabbitCore RCM4510W

- Rabbit core at 29.5 Mhz
- ZigBee connectivity
- 512 Kb flash, 512 Kb SRAM
- 40 I/O lines
- 1.84 by 2.85”
- \$89, development kit \$199 (special)



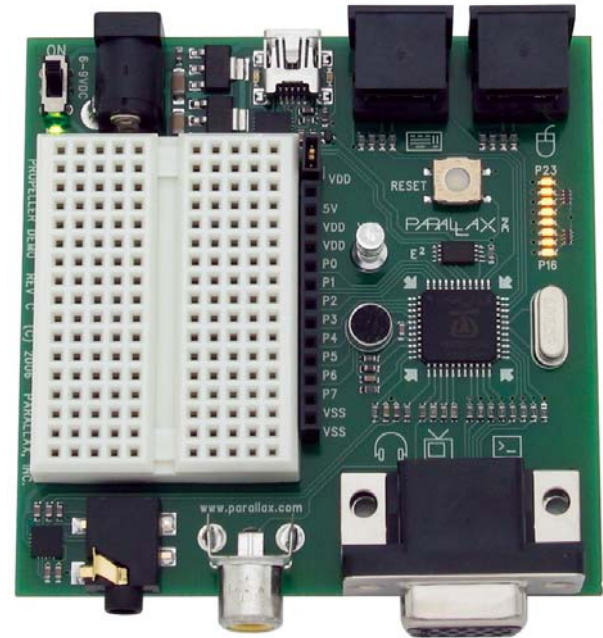
# Tri-M Flexbox

- 600 Mhz Celeron fan-less system
- Many configurations and mountings



# Parallax Propeller Demo Board

- Processor has 8 32-bit cores - \$130
- USB to serial interface for downloading
- VGA and TV outputs
- Stereo audio output
- Microphone input
- Mouse & keyboard
- CF interface for files
- Forth available



# Parallax Boards and Modules

- 6 motor controllers
- RFID reader
- RF transmitter / receiver modules
- Bluetooth module
- BasicStamp + Bluetooth
- Synthetic speech module
- Logic analyzer module
- Oscilloscope module
- USB to serial adapter
- Stamp PLC
- Displays
- Robot kits
- Dual and tri-axis accelerometers
- Compass module
- GPS module
- Temperature / humidity sensor
- Thermocouple kit
- Light to frequency converter
- Color sensor evaluation kit
- PIR motion sensor
- Ultrasonic sensors
- Flexiforce sensor
- Touch sensor
- Vibration sensor
- Hall effect sensor

# Datakey NFX Tokens

- 128 Mb – 8 Gb
- Serial numbered memory
- USB reader interface



[http://www.datakeyelectronics.com/products\\_managed\\_memory\\_keys.html](http://www.datakeyelectronics.com/products_managed_memory_keys.html)

[http://www.datakeyelectronics.com/products\\_managed\\_memory\\_reader.html](http://www.datakeyelectronics.com/products_managed_memory_reader.html)

# Altium NanoBoard

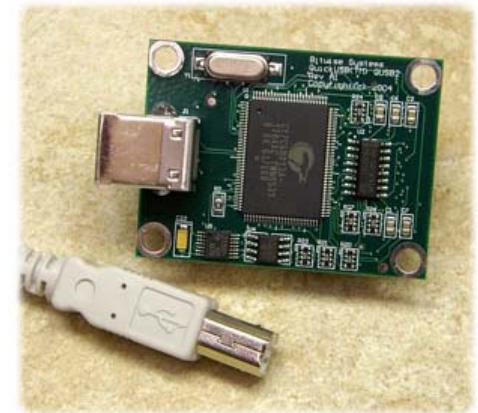
- Hardware and software development platform for FPGAs
- Reconfigurable for Xilinx, Altera, Lattice
- Supports Altium Designer
- USB 2.0 connection to PC
- Integrated touch screen and speakers





# QuickUSB Plug-In Module

- One high speed parallel port, three low speed ports - \$149
- 2 serial ports
- SPI master for up to 10 slaves
- I2C master port
- Adapter board - \$79



# Integration USB ZigBee Dongle



- USB 1.1 / 2.0 - \$70
- Windows and Linux drivers
- Monitor and control ZigBee devices
- Integrate antenna – 30 m range
- Development kit contains 2 dongles and CDROM software - \$150

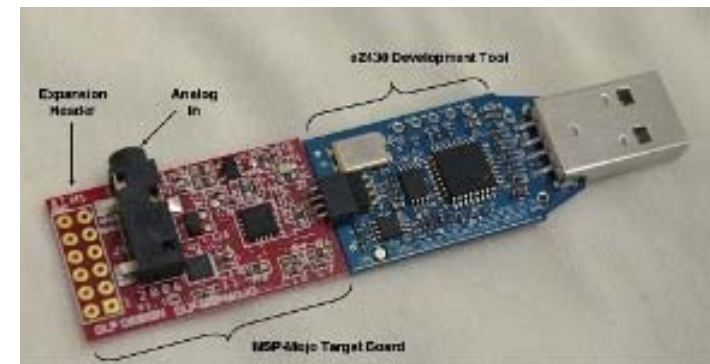
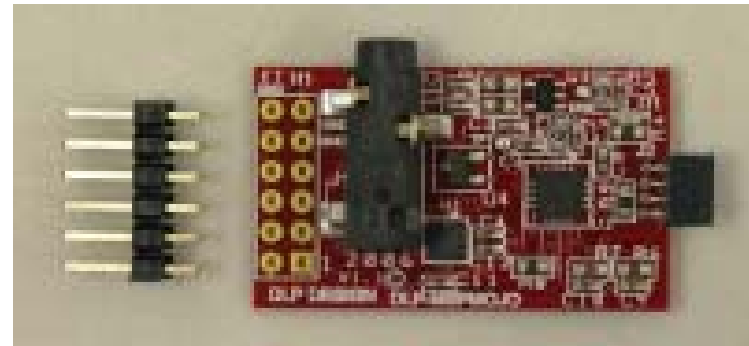
# Integration ZigBee Embedded Module

- Small footprint 37 by 22 mm - \$40
- Operates as router, coordinator, or end device
- Development kit – includes 3 boards, 3 modules, 3 antennas, and 2 dongles - \$800



# QuickFilter SavFIRe Target Board

- MSP-Mojo – high performance digital filtering with TI MSP430
- 512 tap digital filter
- Analog input jack
- Target board \$40
- Development kit \$199



[http://www.quickfiltertech.com/html/qfilter\\_page.php?content\\_id=54](http://www.quickfiltertech.com/html/qfilter_page.php?content_id=54)

[http://www.quickfiltertech.com/html/qfilter\\_page.php?content\\_id=55](http://www.quickfiltertech.com/html/qfilter_page.php?content_id=55)